

S4000

THREE-PHASE, 10kVA to 200kVA

UNINTERRUPTIBLE POWER SYSTEMS



The total solution for uninterruptible power.

PROVIDING POWER PROTECTION FOR:

- Computer and data processing
- Telecommunications systems
- Industrial control and telecontrol process

THE NEXT GENERATION OF UPS FOR HIGH PERFORMANCE AND RELIABILITY

The S4000 brings a new level of quality and reliability to the art of power protection, offering the most advanced technology and ergonomic design. True on-line double conversion ensures your power is clean and available when you need it.

EASE OF OPERATION

The S4000 is easy to use. We know that when the power is down and the pressure is on, you need instant information at your finger tips. The S4000 has one easy to read mimic display which gives you the facts at a glance without the need to scroll through endless menus.

THE S4000 TALKS YOUR LANGUAGE

Whether it's man or machine, the S4000 talks your language. The easy to use front panel can be mimicked remotely or connected to a PC. For automatic operation the S4000 can be interfaced to building management systems and network controlled via SNMP, Novell, Windows NT, Unix, DEC and IBM to name but a few. The all new CheckUPS Plus allows multiserver shutdown via one simple network connection.

MULTIPLE SYSTEM OPERATION

The S4000 grows with your business thanks to Advanced Power Management (APM). As your network expands, rather than replacing your system, the S4000 may be paralleled with any other S4000 to give you increased uninterruptible power. Up to eight units of any power rating can be connected together to run in parallel, hot standby or cold standby.

CUSTOMER SERVICE

We at Best Power know that your three-phase installation needs careful organisation. That's why our expert team is at your service to assist you in all aspects of the planning stage. After your system is up and running Best Power can offer a range of service plans that can be tailored to meet your needs.

 **Best
Power**
UNINTERRUPTIBLE
POWER SYSTEMS

 **Invensys**
Power Systems

BEST POWER NEVER STOPS

The S4000 at a glance

ENVIRONMENTAL

- Small footprint
- Ergonomically designed
- High quality and reliability
- Low noise level
- CE marked
- ISO 9001 manufacturing
- Simple installation
- 12 month warranty

CUSTOMER OPTIONS

- 12 pulse rectification
- Battery and distribution cubicles
- Cubicle ratings to IP54
- Galvanic isolation
- External bypass
- Top cable entry
- Battery earth fault monitoring
- Input filters to G5/3

ADVANCED TECHNOLOGY

- True on-line double conversion
- IGBT technology
- Digitally controlled
- Best Progressive Battery Management (PBM) with temperature compensation
- Individual phase control of inverter voltage and current
- High frequency PWM giving instant response to changes in load conditions
- Integral static and manual bypass

CONNECTIVITY

- User friendly front panel
- Remote monitoring panel
- RS-232 RS-485 interface
- EPO both local and remote
- Interface for all common operating systems
- SNMP protocol
- Volt free contacts

MULTIPLE SYSTEMS OPTIONS

- Units of any power rating can be connected in any configuration
- Parallel up to eight systems
- Hot and Cold standby unlimited systems
- Advanced Power Management (APM) - automated autostart of systems with an increase in load
- Any combination of parallel, hot or cold standby connected as a single system (APM)



The S4000 talks your language



In these days of information overload, it is essential to get clear and accurate data in the format you use. The S4000 speaks your language from man to machine, or machine to machine.

MAN TO MACHINE

USER COMMUNICATION PANEL

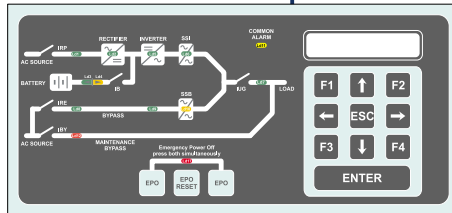
Provides all important status and alarm functions. The easy to follow mimic flow diagram gives UPS status at a glance.

Features include:

- Progressive Battery Management (PBM)
- Battery low alarm
- Emergency off

Alarm and metering functions:

- Output voltage and current
- UPS voltage and current
- Frequency
- Autonomy in minutes

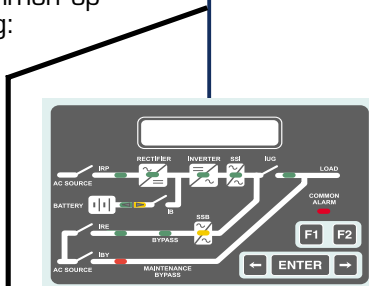


MACHINE TO MACHINE

SOFTWARE INTERFACE OPTIONS

Software for automatic monitoring and shutdown for all common operating systems including:

- Novell/UNIX
- Windows NT
- DEC
- VMS/ULTRIX
- IBM
- SUN
- And many more

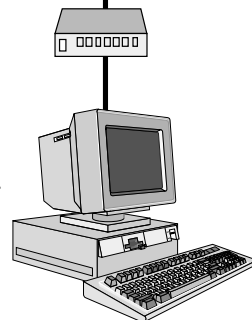
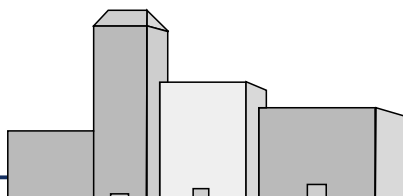


REMOTE USER CONNECTION

Via an RS485 link, this option gives full remote monitoring and operating facilities up to a distance of 400m

BUILDING MANAGEMENT SYSTEMS

Software and volt-free contacts for intelligent building networks.



REMOTE MONITORING

Part of the S4000 global communications package is the ability to dial out to a pager system or service network and display warning messages from any remote location

S4000

THREE-PHASE, 10kVA to 200kVA

UNINTERRUPTIBLE POWER SYSTEMS

SPECIFICATIONS

Rating	10kVA	15kVA	20kVA	30kVA	40kVA	60kVA	80kVA	100kVA	120kVA	160kVA	200kVA	
Dimensions H x W x D (mm)	1470 x 560 x 835							1470 x 825 x 835		1825x1220x925		
Weight (without batt.) (kg)	310	310	345	385	440	510	669	712	745	1075	1175	
System Efficiency	>90%					>91%			>93%			
Sound Level	<60 dBA @ 1Metre							<62 dBA @ 1Metre		<70 dBA @ 1Metre		
Input												
Input Voltage	Three - Phase AC 380 to 415											
Input Voltage Range	±15%											
Input Frequency	50/60Hz ±10%											
Temperature Range	0°C to 40°C											
Output												
Output Voltage	Three - Phase AC 380 to 415											
Output Voltage Regulation	±1%											
Output frequency	50/60 Hz selectable											
Distortion	<1% linear, <4% 3:1 crest factor											
Overload	Inverter 125% 10 min., 150% 1 min. - Bypass 150% continuous											

SHOULD YOU REQUIRE MORE INFORMATION

We would be delighted to send you more detailed information on the S4000 or any of our other UPS products. Should you require it, a member of the Best Power team is at your disposal to discuss your application. With over 75 years in the field of power protection, our advice and expertise is available and just a phone call away.

EUROPE/MIDDLE EAST/AFRICA LOCATIONS

FINLAND
Koskelontie 13
02921 Espoo
Tel. +358 9 452 661
Fax +358 9 452 66 396

FRANCE
ZAC des Delâches, BP 77
GOMETZ-LE-CHATEL
F-91940 Les Ulis
Tel. +33 1 60 12 77 22
Fax +33 1 60 12 74 01

GERMANY
Am Weichselgarten 23
91058 Erlangen
Tel. +49 9131 77700
Fax +49 9131 7770 222

ITALY
Via Monfalcone 39,
20092 Cinisello Balsamo
Milan
Tel. +39-0575-535.1
Fax +39-0575-561 802

UK
Moorside Road
Winnal
Winchester
SO23 7RX
Tel. +44 (0) 1962 844414
Fax +44 (0) 1962 841846

E-mail: infoemea@psd.invensys.com
Website: <http://www.borri.it>
Website: <http://www.bestpower.co.uk>



Best Power offers a complete line of Uninterruptible Power Systems from 280VA to 2.0MVA.


invensys
Power Systems

BEST POWER NEVER STOPS